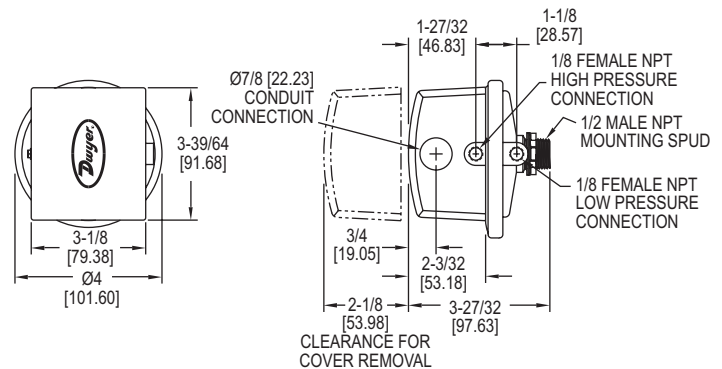
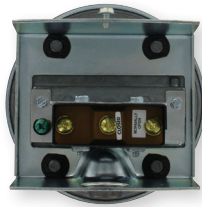


LOW DIFFERENTIAL PRESSURE SWITCH FOR GENERAL INDUSTRIAL SERVICE

Set Points from 0.07 in w.c. to 85 in w.c. Repetitive Accuracy within 2%



Essential for industrial environments, the **Series 1800 Low Differential Pressure Switch for General Industrial Service** combines small size and low price with 2% repeatability for all but the most demanding applications. Set point adjustment inside the mounting stud permits mounting the switch on one side of a wall or panel with adjustment easily accessible on the opposite side. UL and CSA listed, and FM approved.

FEATURES/BENEFITS

- Compact size and repeatability provide a high-value switch useful in many industrial applications
- Designed for panel and wall mounting to easily meet mounting requirements in most industrial settings
- Pressure ranges from 0.07 in w.c. to 85 in w.c. make this switch suitable for a wide range of applications

APPLICATIONS

- Process applications
- Mechanical equipment control

OPTIONS

Weatherproof Housing

16 ga. steel enclosure with gasketed cover (NEMA 4, IP66) for wet or oily conditions. Withstands 200 hour salt spray test. Wt. 5-1/2 lb (2.5 kg). Switch must be factory installed.

Note: To order, change 1823 base number to 1824 and add -WP suffix.

Example: 1824-1-WP

Explosion-Proof Housing

Cast iron base with aluminum cover. Rated Class I, Div. 1 & 2, Group D; Class II, Div. 1 & 2, Groups E, F, G; Class III and NEMA 7 CD, 9 EFG. Wt. 7-1/2 lb (3.4kg). Switch must be factory installed.

Note: To order, change 1823 base number to 1824 and add -EXPL suffix.

Example: 1824-1-EXPL

MIL Environmental Construction

Unlisted Model 1820 can be furnished with a special sealed snap switch for protection against high humidity, fungus and/or military applications. Similar to Model 1823 except deadband is slightly greater and some lower setpoints may not be possible.

Note: To order, add -MIL suffix. **Example:** 1820-2-MIL

SPECIFICATIONS

Service: Air and non-combustible, compatible gases.

Wetted Materials: Consult factory.

Temperature Limits: -30 to 180°F (-34 to 82.2°C); 1823-00: -20 to 180°F (-28.9 to 82.2°C).

Pressure Limits: 10 psig (68.95 kPa) continuous, 25 psig (172.4 kPa) surge.

Switch Type: Single-pole double-throw (SPDT).

Repeatability: $\pm 2\%$.

Electrical Rating: 15 A @ 120-480 VAC, 60 Hz. Resistive 1/8 HP @125 VAC, 1/4 HP @ 250 VAC, 60 Hz. De-rate to 10 A for operation at high cycle rates.

Electrical Connections: 3 screw type, common, normally open and normally closed.

Process Connections: 1/8" female NPT.

Mounting Orientation: Diaphragm in vertical position. Consult factory for other position orientations.

Set Point Adjustment: Screw type inside mounting spud.

Weight: 1 lb 5 oz (595 g).

Agency Approvals: CE, CSA, FM, UL. Optional-EXPL explosion-proof enclosure does not possess any agency approvals.

MODEL CHART

| Model | Operating Range, in w.c. | Approximate Deadband | |
|----------------|-----------------------------|----------------------|-------------------|
| | | At Min. Set Point | At Max. Set Point |
| 1823-00 | 0.07 to 0.22 | 0.05 | 0.05 |
| 1823-0 | 0.15 to 0.5 | 0.06 | 0.06 |
| 1823-1 | 0.3 to 1.0 | 0.08 | 0.08 |
| 1823-2 | 0.5 to 2.0 | 0.10 | 0.12 |
| 1823-5 | 1.5 to 5.0 | 0.14 | 0.28 |
| 1823-10 | 2.0 to 10 | 0.18 | 0.45 |
| 1823-20 | 3 to 22 | 0.35 | 0.70 |
| 1823-40 | 5 to 44 | 0.56 | 1.10 |
| 1823-80 | 9 to 85 | 1.30 | 3.0 |

ACCESSORIES

| Model | Description |
|-----------------|---|
| A-389 | Mounting bracket; 16 ga. steel, zinc plated and dichromate dipped for corrosion resistance; provides rugged, permanent mounting and speeds installation |
| A-489 | 4" straight static pressure tip with flange |
| A-491 | 6" straight static pressure tip with flange |
| A-493 | 8" straight static pressure tip with flange |
| A-302F-A | 303 SS static pressure tip with mounting flange; for 3/16" ID rubber or plastic tubing; 4" insertion depth; includes mounting screws |
| A-302F-B | 303 SS static pressure tip with mounting flange; for 3/16" rubber or plastic tubing; 6" insertion depth; includes mounting screws |
| A-302F-C | 303 SS static pressure tip with mounting flange; for 3/16" rubber or plastic tubing; 8" insertion depth; includes mounting screws |