

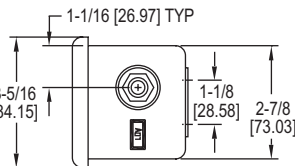
**Dwyer****SERIES 647**

# WET/WET DIFFERENTIAL PRESSURE TRANSMITTER

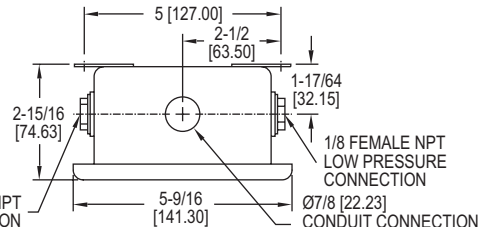
$\pm 1.0\%$  Accuracy, NEMA 4 (IP56) Enclosure, 2-Wire



[4] 1/4 [6.35] LONG X 7/32 [5.56]  
WIDE MOUNTING HOLES



1/8 FEMALE NPT  
HIGH PRESSURE CONNECTION



Monitor differential pressure in air/liquid flow systems, HVAC automation, pneumatic systems and process control with the **Series 647 Wet/Wet Differential Pressure Transmitter**. Units are temperature compensated and provide a 4-20 mA output signal which can be interfaced with chart recorders, data loggers and computerized monitoring and control systems.

## FEATURES/BENEFITS

- Versatile for liquid or gas supports designs requiring more precise measurements in support of application
- Temperature compensated improves performance of device for accurate measurement under different operating environments
- Output signal provides capability to interface with automation systems to centralize monitoring

## APPLICATIONS

- Flow
- HVAC automation
- Process control
- Pneumatic systems

MODEL CHART	
Model	Range
647-0	0 to 1 in w.c.
647-1	0 to 3 in w.c.
647-2	0 to 25 in w.c.
647-3	0 to 5 in w.c.
647-4	0 to 10 in w.c.

OPTIONS	
Use order code:	Description
NISTCAL-PT1	NIST traceable calibration certificate

## SPECIFICATIONS

**Service:** Compatible gases or liquids on both pressure and reference sides.

**Wetted Materials:** Brass, vinyl, glass-filled polyester, silicon, and fluorosilicone.

**Accuracy:**  $\pm 1.0\%$  FS.

**Stability:**  $\pm 1.5\%$  FS output/year.

**Temperature Limits:** 32 to 122°F (0 to 50°C).

**Pressure Limits:** Ranges 1 in w.c. to 5 psi: 20 psi, 15 psi range: 45 psi, 30 psi range: 60 psi.

**Thermal Effects:** Zero:  $\pm 0.05\%$  FS/°F; Span:  $\pm 0.05\%$  rdg/°F.

**Power Requirements:** 18-30 VDC.

**Output Signal:** 4-20 mA, 2-wire.

**Zero and Span Adjustments:** Adjustable,  $\pm 10\%$ .

**Loop Resistance:** 400Ω @ 18 VDC, 600Ω @ 24 VDC, 1000Ω @ 30 VDC.

**Electrical Connection:** Screw terminals, reverse polarity protected.

**Process Connections:** Two 1/8" female NPT.

**Housing:** Gasketed steel epoxy painted, NEMA 4 (IP56).

**Weight:** 14 oz (397 g).

